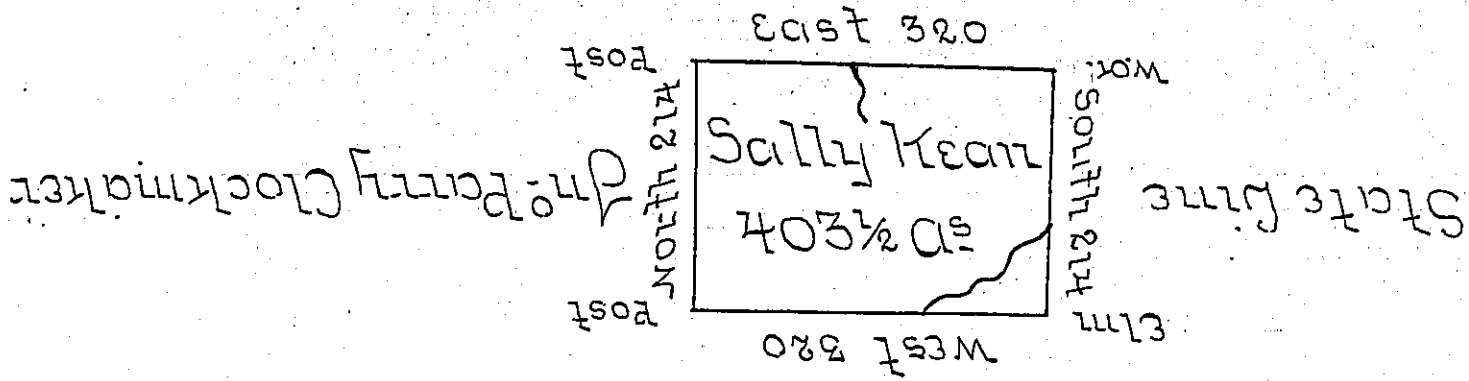


Daniel Eddy



James Beale

Situate on the Waters of Lake Erie in Allegheny
 County District No. 1 Surveyd 21-June 1794 to
 Sally Kean on her Warrant dated 15-April 1792
 Containing four hundred three Acres and half &
 allow^e

Thos Rees JS

Danl Brodhead Esq^r }
 Survey Genl }

*IN TESTIMONY that the above is a copy of the original remaining on file in
 the Department of Internal Affairs of Pennsylvania, made
 conformably to an Act of Assembly approved the 16th day of
 February, 1833, I have hereunto set my Hand and caused
 the Seal of said Department to be affixed at Harrisburg,
 this eighth day of August 1905.*

Isaac R. Brown
 Secretary of Internal Affairs.